

IEEE 802.15.4 Sniffer & Protocol Analyzer



Product Brief MeshDecoder for IEEE 802.15.4/ZigBee

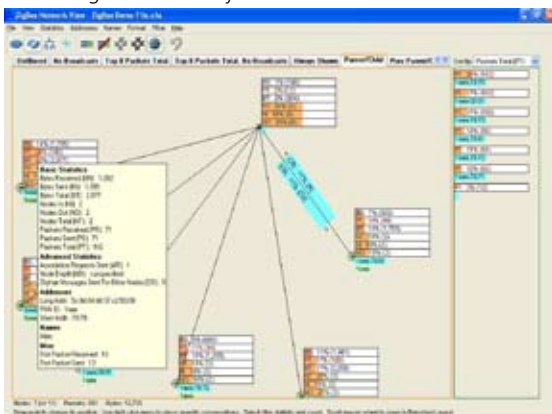
The Frontline MeshDecoder is a real-time debugging, verification and network display analyzer, that simplifies the understanding of IEEE 802.15.4 / ZigBee networks by simultaneously capturing, decoding, displaying, filtering and detecting errors. The PC-based MeshDecoder sniffs air data and displays each packet in a variety of formats, from raw binary and hex through detailed, fully decoded, field-by-field descriptions of the captured data. Decoding begins at the IEEE 802.15.4 MAC level and goes all way up the ZigBee stack, to the profile level. Packets that contain protocol violations are flagged in red for easy detection of bad messages. The Frontline product range of Sniffers and Protocol Analyzers also includes Bluetooth and Wireless LAN solutions.

KEY FEATURES

- Captures and decodes data sent over the air
- The Network View provides a visual indication of node relationships and statistics
- Decoded packets are displayed in a summary decode, detailed decode and raw ASCII/Octal/Hex data
- Through the use of a DecoderScript language the user can write decoders for custom protocols
- MeshDecoder is an ultimate multifunctional monitoring, evaluating and troubleshooting device

NETWORK VIEW

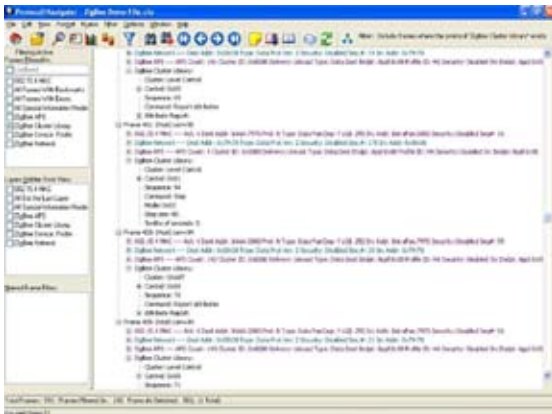
- Packets Transmitted and Received
- Bytes Transmitted and Received
- Association Requests Sent
- Number of Nodes that Data is Received from & Sent to
- Node Depth Information
- Order of Appearance
- Broadcast Information
- Addresses PAN ID, Short Address and Long Address
- Orphan Messages Sent for this Node
- Assign User-Friendly names for each Node



Meshdecoder's network view provides you with a view of node statistics

FRAME DISPLAY - COMPREHENSIVE

The detailed information in the Frame Display window is presented clearly and with as much, or as little, detail as you require.



The frame display presents the following:

- Summary Information for Messages Sent and Received
- Message Frame Decoded into Text
- ZigBee Cluster Library Decoded down to a Specific Value
- Protocol Errors Identified with Red Frame Numbers
- Messages Shown in Binary, Octal, Hex and ASCII
- Display Filters including Pre-Set Filters, Node Information Filters and User Defined Complex Filters
- Side-by-Side Comparisons with Multiple Display Windows

CAPTURE OPTIONS INCLUDED

Capture directly to disk

Capture to a single file and choose to wrap or close file when full.

For 24/7 data capture, capture to a series of files and optionally wrap files.

Capture file size is mostly dependent on PC's hard drive size.

MINIMUM PC REQUIREMENTS

1GHz Pentium PC or equivalent

Windows XP

512MB of RAM

50 MB of free disk space

USB port

ORDER NUMBER
cB-Meshdecoder

connectBlue™

The strongest connection in a wireless world

HEAD OFFICE: connectBlue AB | Norra Vallgatan 64 3V | SE-211 22 Malmö | Sweden | Phone +46 40-6307100 | Fax +46 40-237137
 US OFFICE: connectBlue Inc. | 1460 N. Sandburg Terrace, Suite 2412 | Chicago, IL 60610 | USA | Phone +1 312 927 5859 | Fax +1 312 277 3209
 info@connectblue.com | us-info@connectblue.com | www.connectblue.com

Printed in Sweden. ©2008 connectBlue AB. All rights reserved. All specifications are subject to change without notice. The connectBlue word mark and logo are owned by connectBlue AB. The Bluetooth word mark and logos are owned by the Bluetooth SIG, Inc. and any use of such marks by connectBlue is under license.